

UC DAVIS MBA ONLINE



Top-20 Online MBA Program in the U.S.

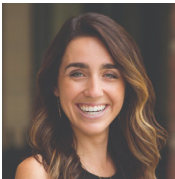


STUDENT HANDBOOK

OMBA SUPPORT TEAM



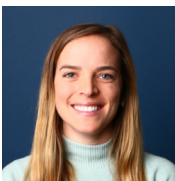
Ben Blanchfield
Student Success Manager



Rachel Metcalf
Student Success Advisor



Simone Richardson
Student Success Advisor



Ally Stevens
Student Success Advisor

GSM STAFF CONTACTS



Professor Joe Chen
MBA Academic Director
(530) 752-7155
jechen@ucdavis.edu



Amy Russell
Sr. Assistant Dean, Student Affairs
(925) 487-9095
gsmadmissions@ucdavis.edu



Omega Lee
OMBA Deputy Director
(530) 752-5354
gsm-onlinemba@ucdavis.edu



Diana Vail
OMBA Program Manager
(916) 920-1399
gsm-onlinemba@ucdavis.edu

STUDENT SERVICES



Inger Maher, Director
Student and Academic Services
(530) 754-5476
ilmaher@ucdavis.edu



Lisa Sanchas, Registrar
Student and Academic Services
GSMRegistrar@gsm.ucdavis.edu

Student Services Support
studentsupport@onlinemba.ucdavis.edu

Financial Aid
gradmail@ucdavis.edu

STUDENT RESOURCES

ACCOMODATIONS

Please request accommodations as early as possible at the start of each course to allow ample time for the coordination of services:

<https://sdc.ucdavis.edu/request>

STUDENT LEADERSHIP

The Graduate School of Management's Student Association Online MBA (GSM SA OMB A) represents the Online MBA student voice and enriches your collective journey:

<https://gsm.ucdavis.edu/post/gsm-student-association-online-mba-gsmsa-omba>

COUNSELING SERVICES

UC Davis Counseling Services provides student-centered mental health services, advocacy, outreach, and consultation to promote psychological well-being and academic success:

<https://shcs.ucdavis.edu/services/counseling-services>

PERSONAL RESOURCES

Our mission is to ensure that every student has safe, secure housing, access to healthy food, and financial stability, that will help them succeed at UC Davis and in life:

<https://aggiecompass.ucdavis.edu>

UC DAVIS CAMPUS GUIDE

<https://gsm.ucdavis.edu/sites/default/files/daviscampusguide.pdf>

VETERANS SUCCESS CENTER

The Veterans Success Center (VSC) at UC Davis is committed to providing services to student veterans, service members and dependents of the Armed Services:

<https://veterans.ucdavis.edu>

CAREER SUPPORT SERVICES

True career management is a lifelong process. One of the best ways to ensure a long and successful career is to learn the strategies and tools of proactive career management:

<https://gsm.ucdavis.edu/current-students/career-support-services>

STUDENT AGGIECARD

Your Student AggieCard is your official UC Davis identification; giving you access to the many available products, services, resources, and benefits available to you as a UC Davis student:

<https://registrar.ucdavis.edu/records/aggiecard>



ADDITIONAL RESOURCES

UNIVERSITY WRITING PROGRAM

The Graduate Writing Across the Curriculum (GWAC) Graduate Writing Fellows offer one-on-one writing consultations with graduate students and postdoctoral scholars, host writing retreats, and run the Graduate Certificate in Writing Theory and Practice and the Writing Partner Program:

<https://writing.ucdavis.edu/gradwriting/grad-writing-fellows>

ACADEMICS AND REGISTRATION TOOLS

Code of Conduct, Policies and Procedures, and Academic Planning Resources:

<https://gsm.ucdavis.edu/current-students/online-mba/academics-and-registration-tools>

SCHOLARSHIPS

Your MBA represents a significant investment in your future. A variety of financial aid programs are available:

<https://onlinemba.ucdavis.edu/admissions/tuition-and-financial-aid/>

PLANNED EDUCATIONAL LEAVE PROGRAM

The Planned Educational Leave Program (PELP) allows students to take a temporary pause in enrollment and academic work, while guaranteeing return to their program to resume their studies:

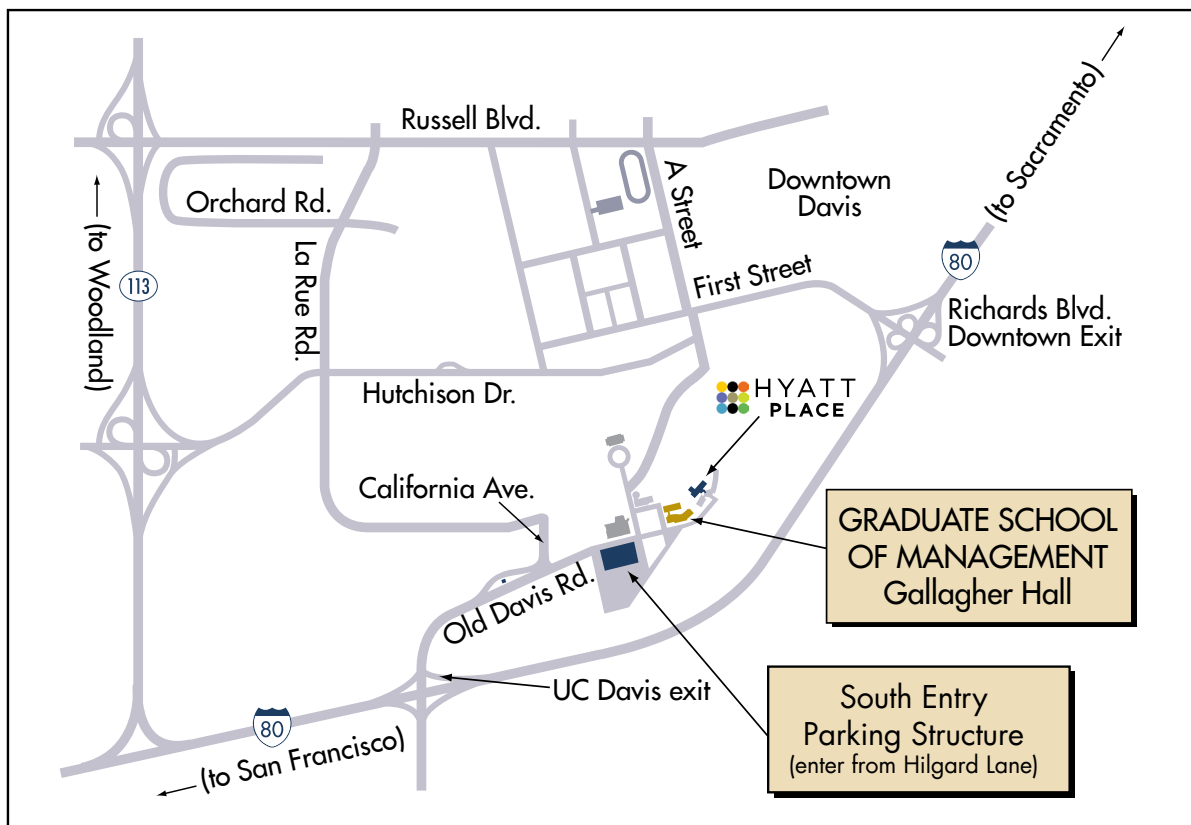
<https://grad.ucdavis.edu/planned-educational-leave-program-pelp>

UC DAVIS GRADUATE SCHOOL OF MANAGEMENT CALENDAR

<https://gsm.ucdavis.edu/calendar>



DIRECTIONS TO UC DAVIS GSM



From San Francisco

- Take Interstate 80 East.
- Take the UC Davis Exit.
- Turn left on Old Davis Road.
- Continue through the roundabout.
- Turn right on Hilgard Lane.
- Turn left into the South Entry Parking Structure.

From Sacramento

- Take Interstate 80 West.
- Take the UC Davis Exit.
- Turn right onto Old Davis Road.
- Continue through the roundabout.
- Turn right on Hilgard Lane.
- Turn left into the South Entry Parking Structure.

PARKING

A valid UC Davis permit is required to park on campus, either paid for through the [ParkMobile app](#) or a displayed permit purchased from one of our COSMOS permit dispensers (located in most campus lots). There are several parking lots near Gallagher Hall. The Gateway Parking Structure and Visitor parking Lots 1 and 2.

For more information on parking, call (530)754-8940 or visit the [UC Davis TAPS website](#).

Parking hours: 7:00 a.m. – 10:00 p.m. Monday – Friday.

Daily Fee: \$2 - \$3.60 dollars for affiliates and \$12-\$12.50 for visitors.

For latest updates on parking daily rates, please go to: <https://taps.ucdavis.edu/dailyrates>

*Purchase of a permit is not required on weekends or University holidays, except during special events when parking attendants are present. Restricted Spaces are enforced 24 hours a day, 7 days a week.